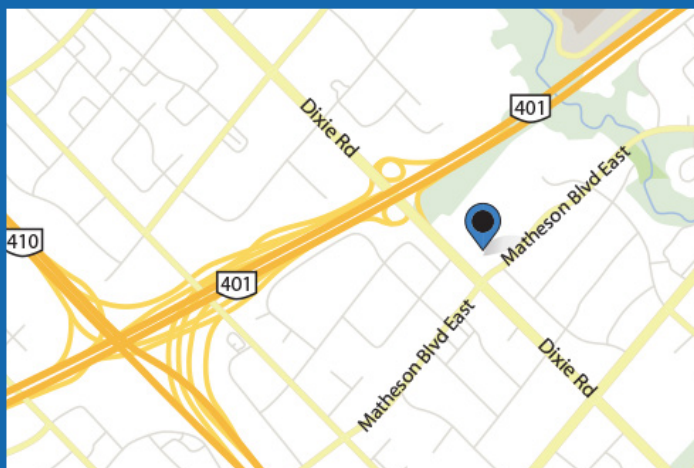


# 1515 Matheson Blvd East, Unit B 1-2

Mississauga, ON



## Property Details

### Unit B 1-2

|                    |                               |
|--------------------|-------------------------------|
| Area, Square Feet: | 4,760 SF                      |
| Clear Height:      | 16'                           |
| Power:             | 100 Amps/ 3-phase / 600 volts |
| Shipping Doors:    | 1 Dock-level door             |

## Building Features & Comments

- Right on the corner of Dixie and Matheson
- Great access to Highways 401 and 410
- Warehouse with Limited Office Space

## Contact Us

Tel: (416) 792-0438  
[www.BritanniaProperties.com](http://www.BritanniaProperties.com)

### Britannia Property Management

2700 Dufferin Street, Unit 71  
Toronto, ON M6B 4J3 Canada

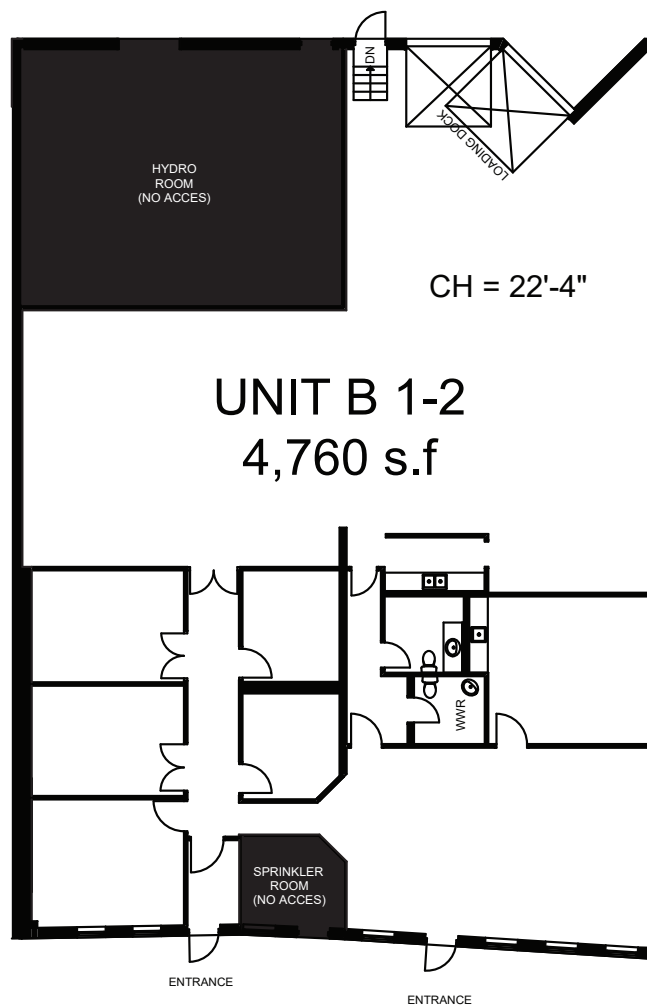


**BRITANNIA  
PROPERTIES**

# 1515 Matheson Blvd East, Unit B 1-2

Mississauga, ON

## Unit Floorplan



1515 MATHESON ROAD EAST  
UNIT B 1-2



CITY OF MISSISSAUGA



# 1515 Matheson Blvd East, Unit B 1-2

Mississauga, ON



Unit Location

